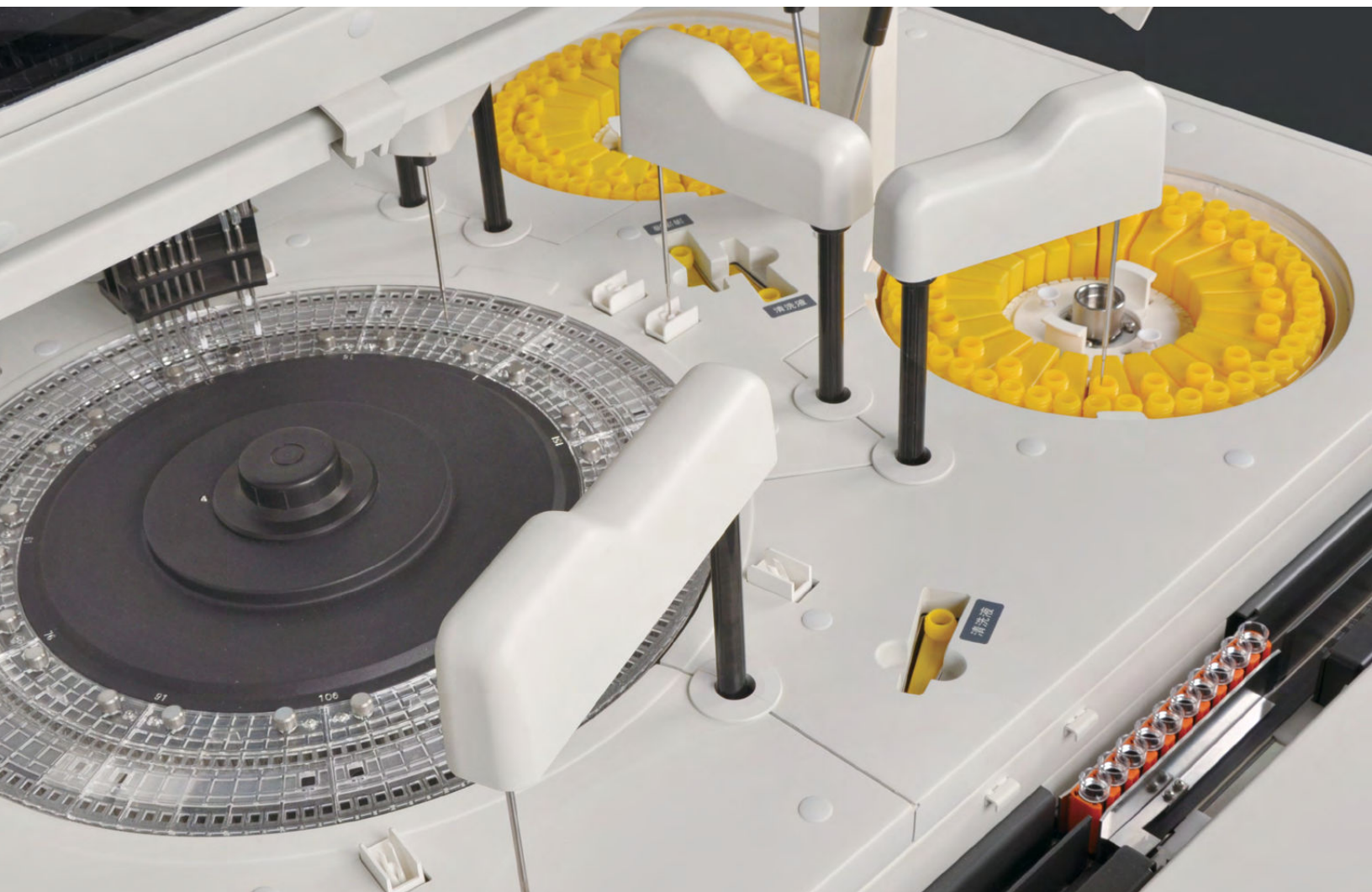




**CLC** 6410

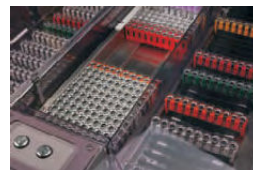


## High Volume Modular Analyzer



### Large Capacity Sample Loader and Track

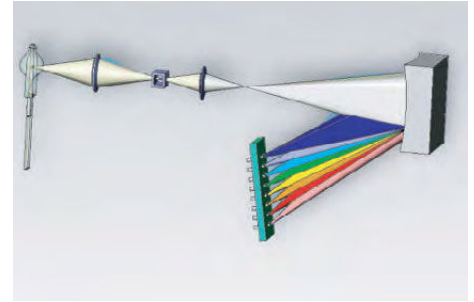
- Auto-track loading for great efficiency and productivity. Large capacity sample loader can hold as much as 30 sample racks (300 samples). STAT function provides quick access for samples.



# Advanced Photometry System

## Holographic concave flat field grating, rear spectrophotometry

- Cluster-condensing light (point light source) technology for microvolume analysis and reduced reagent consumption
- Air cooling extends the life of the Light Source
- Precision design eliminates signal attenuation and interference
- Ambient Light Interference Control System contributes to accuracy of results



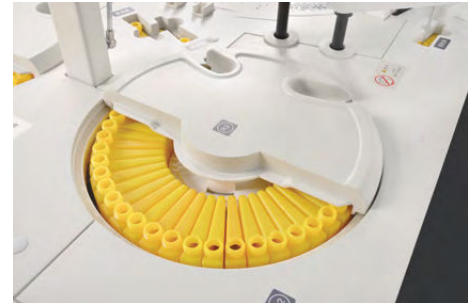
# Stable Temperature Control System

## A. Cooling System

- Advanced postposition semi-conductor ensures direct heat release.

## B. Constant Temperature System for Reaction Cuvettes

- Reaction cuvettes are evenly heated, reducing the influence of ambient temperature without the need to pre-heat reagents
- PID thermostat technology ensures  $37^{\circ}\text{C} \pm 0.1^{\circ}\text{C}$



# Accurate Sampling System

## Probe:

- Polished probes with nano processing technology effectively reduce cross-contamination
- Automatic liquid level detection: probes automatically detect liquid level and stop descending, ensuring perfect depth of submersion
- Collision detection function; self-resetting; automatically resumes sample and reagent pipetting
- Intelligent clot detection
- High pressure rinsing function and enhanced pipetting volume accuracy. High pressure rinsing for inner walls of 5 probes; waterfall rinsing for outer walls
- Operator alerted when reagent is low. When reagent is consumed, automatically reflexes to the next reagent cartridge. Automatically detects and displays remaining volume and available test amount.



## Syringe:

- Long-life, high-precision ceramic piston ensures high precision of sampling and low maintenance cost
- Water degassing technology removes dissolved air in the tube system to ensure quick, accurate, and microvolume pipetting.



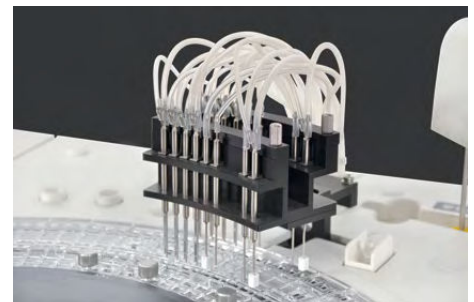
# High-Efficiency Rinsing System

## A. Automatic Cuvette Rinsing

- 8-stop, 11-step warm water rinse ensures thorough cleaning

## B. Probe Inner Wall Rinsing

- Vacuum liquid draining; high pressure detergent and warm water rinsing
- Carryover contamination rate  $\leq 0.1\%$





## *Module Integration*

For Continuous Workflow

Flexible Module Integration PLUS Independent Module Control



The throughput of a single module can achieve 1600 tests/hour.

***Safe | Efficient | Flexible | Independent***

Representing the highest level of Chemistry Analyzer technology



Four integrated modules can achieve maximum throughput of 6400 tests/hour to meet the demands of high-volume hospitals.

## Calibration and QC

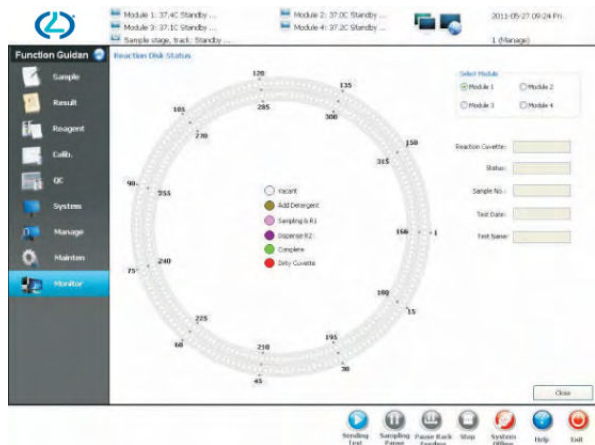
- Linear and non-linear calibration
- 9 selectable calibration curves
- Up to 10 calibration points and allows within-lot calibration
- QC with Westgard multi rules, Levy-Jennings chart, and cumulative summary
- Explanation for out-of-range QC may be recorded and re-run

## Operating Software

- Intuitive software
- Built-in troubleshooting guide
- Self-monitoring of system parameters
- Convenient and efficient data dictionary and information input
- Calibration and control data query, statistics, and reports
- Multiple report formats with user customization

## Monitoring and Calculating Function

- Checks for linear limits, reference limits, substrate depletion, and excess antigen
- Serum indices for hemoglobin, lipemia, and bilirubin
- User-defined carry-over settings
- Hierarchical user permission management for security



## Barcode Scanning

---

- Automatic sample barcode scanning ensures positive sample identification
- Automatic reagent barcode scanning enables accurate, fast reagent loading and tracking



## Easy to Use Design

---

- Easy-to-load reagent wheel
- Low reagent-dead volume
- Flexible sample positions
- 12 – 16mm sample tubes and sample cups

## Advanced Analysis System

---

- High precision instrument + high quality reagents
- Auto re-run of out-of-range results



## ISE Module(Optional)

---

- Independent ISE modules, up to 2 modules per system
- Indirect simultaneous measurement of  $K^+$ ,  $Na^+$ ,  $Cl^-$
- 480 tests/hour per module with maximum throughput up to 960 tests/hour
- Long life electrodes





## High Volume Modular Analyzer

### Specifications

System Type	Random access, fully automatic, discrete, STAT priority
Throughput	Constant speed 6400 tests/hour colorimetric (integration of 4 modules) Max. ISE throughput up to 960 tests/hour
Light Source	Long life halogen lamp
Wavelength	340-800nm, 13 wavelengths
Analysis Method	End-point, kinetics, fixed-time, turbidimetric
Calibration Method	1 point method, 2 point method, multiple point linear method, non-linear method
Probe	Independent sample probes, reagent probes, automatic liquid level detection, probe liquid level sensing and clot detection function
Rinsing Mechanism	Probe inner wall high pressure rinsing
Mixing Mechanism	2 sets independent mixers for each module ensure sufficient reaction
Reaction Cuvette	330 reaction cuvettes for each module
Temperature Control	Reaction disk incubation bath temperature is 37°C ± 0.1°C
Reagent Position	134 reagent positions for each module; 67 2-part reagent tests
Sample Volume	1.5ul - 30ul, 0.1 ul increments
Reagent Volume	15ul - 300ul, 1ul increments

Carolina Liquid Chemistries, Corp.  
313 Gallimore Dairy Rd  
Greensboro, NC 27409

877-722-8910  
contactsales@carolinachemistries.com  
www.carolinachemistries.com

